

2022 ELEGANT LADY #886

SERRADO-B TRIPLE SUPER SLIDE EDITION





A/C & HEATING SYSTEMS

- 4- 15,000 BTU Dometic Reverse Cycle heat pump A/C systems with Crestron control.
- Air conditioning ducted through ceiling with concealed return air grills
- 83,000 BTU Espar with soldered hard wall copper plumbing with 6 heat exchangers continuously circulating hot water heat through the main engine and domestic water heater.
- Espar heat zoned on three thermostats including one in water bay
- Electric heat in bathroom toeboard
- Thermostatically controlled electric heat in water bay

ELECTRICAL SYSTEMS

- Continuous and uninterrupted stranded wiring
- 58 volt Volta Power Systems house electrical system
- 3 digital Crestron touchpad operator interfaces
- Moritz Aerospace CAN bus network, electronic circuit breaker system with flat panel control, Crestron interfaced
- 12.5 KW Onan generator
- Exclusive Liberty Coach Super Quiet Generator hush box sound insulator
- Liberty Coaches own 90 amp automatic shore power transfer switch
- 3- 5000 watt -58 volt Volta Sine Wave Inverters
- 2- Lithium Ion 58 volt Volta Battery Packs interfaced to the Volta Network for complete monitoring of battery information
- 1 maintenance-free generator starting battery with auto boost from house batteries

- Exclusive Liberty Coach engineered Battery Watchdog automatic generator starting system
- Automatic shore power loss generator start control
- Shore power inlets on both port and starboard sides
- 75' electric shore power cord reel with remote control
- Cheater shore power adapter for twin 30 amp service
- Aesthetically pleasing switch locations
- Toe board accent lighting throughout coach
- Intercom system with remote control exterior camera & monitor in bedroom
- LED lights inside all interior cabinets
- Cradlepoint Wi-Fi internet access system

AUDIO/VISUAL SYSTEMS

- 55" LED/LCD 4K display in living room on roll down mechanism and 49" LED/LCD television in bedroom.
- Wyrestorm HDMI audio/video switch with custom Fiber Optic HDMI cabling.
- Integra FM/AM Dolby Pro-Logic Surround sound systems in living room and bedroom with Air Play iPod connectivity and KEF speaker systems.
- BluRay player, 4K in Living room
- Crestron remote control system on 3 touch screens and 1 3" wireless remote, and 3 iPad Air's which controls complete coach systems including:
 1. Bedroom and Living room audio/video, and satellite systems
 2. Awning
 3. All lighting
 4. Mechanical systems such as generator, Heat/AC, and electric locks

5. Dash panel interfaced to back up camera
6. Outdoor temperature with humidity display on all panels
7. Espar heat thermostats
 - 40 channel high output Cobra 29 LTD Classic CB radio with remote external speaker
 - Dash 12" iPad Pro which displays all coach functions including Fusion AM/FM Radio, Sirius Radio, and CoPilot RV Navigation system
 - Lower bay entertainment center: 65" LED/LCD 4K Flat Screen TV, Integra 110 volt stereo, larger refrigerator, storage drawers and phone jack
 - Winegard in-motion and HD DSS Satellite System with 3 HD DVR receivers
 - Winegard electric TV antenna with HD local broadcast tuner

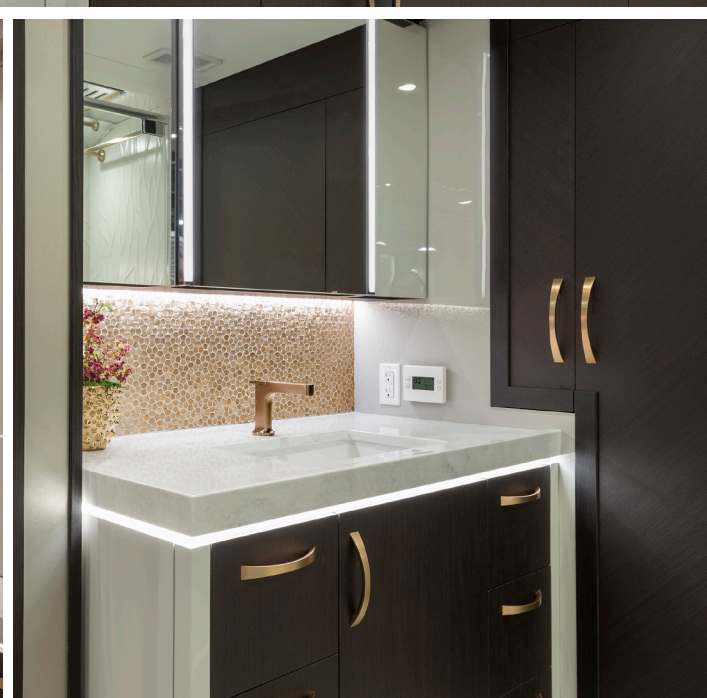
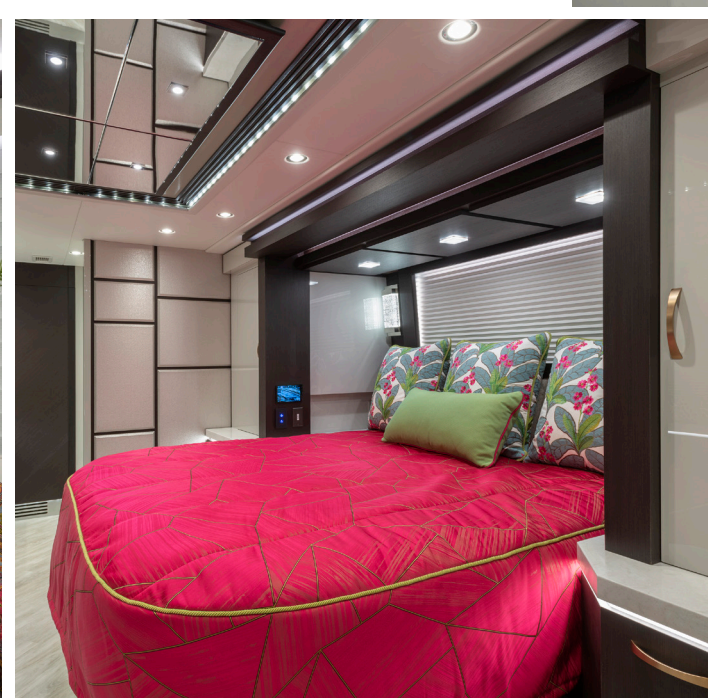
WATER SYSTEMS

- 189 gallon polished stainless steel fresh water tank
- 189 gallon aluminum holding tank with polished stainless front
- Enclosed water compartment with decorator laminate
- Holding tank compartment side walls and floor polished
- Hot & Cold water faucet in water tank compartment with hand sprayer
- Cold water hose connection in holding tank compartment for wash down and sewer hose clean-up
- Entire fresh water system, ½" ID tubing for constant pressure and volume in all areas
- Lacquer coated polished copper plumbing in holding tank bay
-

- 40 gallon electric water heater with main eng. heat exchanger & winterization bypass
- Auto fresh water tank fill while connected to city water supply
- Fresh water & holding tank monitors at forward overhead, driver & passenger side water bays
- City water inlet on both sides with 100 foot retractable hose reel on driver side.
- Hot Water Return System at all faucets and shower valve.
- Air operated holding tank dump valve on both driver and passenger side
- Air operated gray water by-pass
- Air dump valve for fresh water tank
- Starboard side air dump valve
- Macerator pump out system for holding tank
- 110 volt jet-pack water pump with integral pressure vessel & polished stainless steel end cover
- Emergency water shut-off valves located at each faucet
- Culligan 3-stage water treatment unit with reverse osmosis filtration faucet at galley sink

BATHROOM/HALL VANITY/BEDROOM SHOWER AREA

- Water-jet anti-fume toilet
- Fantastic Vent bath fans with rain sensors in toilet room & in shower
- Wood flooring
- Tiled bathroom and hall vanity backsplash
- Separate his & her vanities with solid surfacing countertops with intergraded drip edge matching bowls or top mounted glass bowls
- Upgraded vanity faucets





- Halogen lights above each vanity with adjustable directional lighting
- Mirrored bath/hall ceiling
- Marble or granite shower shampoo caddie. Custom made shower pan and shower side walls built with rock board.
- Temperature/pressure controlled shower valve with hand sprayer

CABINETRY/GALLEY/LIVING ROOM

- Wood veneer cabinetry and high gloss laminate.
- Custom moldings at intersection of ceiling and window arches
- Solid surface countertops with integral drip edge design & underside lighting
- Breakfast bar with 2 swivel chairs on slides and 21" TV
- Large single bowl galley sink with cover
- Sink cover storage rack
- Adjustable shelves in cabinets in galley cabinets
- Galley backsplash is tiled
- Pantry with adjustable shelves
- Concealed paper towel holder
- Keurig coffee maker with water plumbed to it from R/O water system
- Miele Convection Oven/Microwave
- Trash Container Drawer with removable basket
- Fisher Paykel Pantry Style Refrigerator with Freezer Drawers
- Bosch stacking washer/dryer unit
- 2-burner, 220 volt Wolf induction cooktop, recessed with cover
- All interior walls of cabinets fully finished and laminated
- All cabinetry sub straight manufactured of hardwood and lightweight cored material
- Cabinets are attached directly to coach framework
- All cabinet doors and drawers have positive catches
- Floors of cabinets and drawer boxes lined with a secured plush covering

- Single lever galley faucet with integral spray nozzle
- Liberty Coach designed mirrored and upholstered ceiling with custom designed wood moldings throughout with abundant LED down lighting on dimmers
- Wood flooring in galley and hallway
- CAD/CAM manufactured window frame surrounds designed to fit to coach window profile to allow most spacious "open" interior feeling
- Upholstered window frames with recessed lighting
- Custom built overstuffed electric sleeper sofa driver side
- 1 living room recliners with foot rest and desk cabinet
- Custom decorative throw pillows
- Quilted lower coach walls and entry door treatment
- Electrically operated window shades in living room with remote control
- Individual window shade for each window that can be operated all together or separately with remote.
- Air-operated pocket door with emergency release
- LED lighting in window arches
- Wood flooring in living room

BEDROOM

- Wood veneer cabinetry and high gloss laminate
- Custom bedroom ceiling with mirrored treatment
- Reading lights above bed
- Abundant LED down lighting on dimmers
- Electrically operated blackout window shades with remote control.
- King size bed with PranaSleep mattress
- Upholstered bed base
- Bed raised on toe board with decorative accent lighting underneath
- Custom quilted and shirred bedspread
- Upholstered walls & window sills
- Ultrasuede and fabric upgrades
- Custom made decorative throw pillows
- Flat charge ports for inductive phone charging

- Large digital safe at the foot of bed
- Digital clock with alarm, snooze and dimmer built into Crestron panel
- Air operated pocket door from hallway to bedroom

DASHBOARD/ELECTRONICS/DRIVER'S AREA

- Air operated step well cover with dual controls at driver and passenger side
- Entrance door step apron covered in polished stainless steel
- Handrail at inside entry
- Blacked-out front overhead cabinet
- Upholstered & padded bullnose edge on bottom of forward overhead cabinet
- Driver & Passenger dash upholstered in leather
- Electric privacy shades for driver & passenger with controls at driver's dash and passenger cabinet
- Electric sun shades for driver & passenger windshields with controls at driver's dash and passenger cabinet
- Smart Wheel, steering wheel
- Exclusive Liberty Coach custom upholstered driver and passenger cockpit area
- Custom dash panels
- Knoelder air-ride custom upholstered leather and contrast insert driver's seat with electric base, heat, cooling, and massage
- Extra large stainless steel cup holders located thru-out driver and passenger area.
- 28" leather and contrast insert Villa six-way power co-pilot seat with footrest, heat and massage
- Driver and passenger map lights
- Ergonomically engineered gauge and switch locations at driver's dash
- House battery amp and voltage display on iPad
- 3- Master lighting switch controls
- 3- Tivoli accent lighting master switch controls
- Electric bay door locks with controls at driver, passenger, bedroom



- Upholstered entrance door with decorative design and LED lighting
- Keyless touchpad entry system with key fob and integral alarm system
- Escort radar detector with front and rear receivers including laser detection built into dash
- High resolution color back-up camera w/pan-tilt interfaced to the Crestron dash panel
- Rechargeable flashlight at passenger cabinet
- Key ring hanger at entrance door designed to hold 5 sets of keys
- Driver console with extra large cup holder
- Generator stop/start controls at dash, galley, bedroom, & lower compartment

EXTERIOR/UNDERCOMPARTMENT

- Keyless touchpad entry system
- Steering wheel controlled air horn mounted behind front bumper
- Exclusive time-proven Liberty Coach designed Auto Level system with independent front, left rear and right rear manual override
- Electric Sunscreens at driver and passenger windshields
- Liberty Coach manufactured docking light, and front end trim
- Air Horns mounted behind front bumper
- Liberty Coach manufactured polished stainless steel side rails
- 13 Liberty Coach exclusive dimmable LED exterior mounted lights which are mounted on the driver side, passenger side, above the shore power inlets and at the bottom of the Entertainment Center bay door.
- Zip Dee New Century 2 stage box type awning system mounted on the roof full length driver and passenger side with front and rear interface caps; entire system painted to match coach. System includes shake and rain sensors
- 4 Zip Dee chairs embroidered with Liberty Coach logo
- Wheel decor package
- Drive axle flap with polished trim on fenders

- 12 marker lights with polished stainless steel marker light trim
- Rear mud flap with polished stainless steel trim
- Polished stainless steel weights on all splash guards
- Docking lights mounted below rear bumper
- Custom designed polished stainless steel exhaust tip for generator exhaust
- Exclusive Liberty Coach manufactured polished stainless steel main engine belt guard
- Extra large lights in engine compartment
- Racor engine filter
- Trailer hitch with light converter package for 3 or 4 tail light combinations
- 220 volt 30amp trailer power outlet at rear of coach.
- Stainless cap on trailer hitch
- Exclusive Liberty Coach logo trailer hitch cover
- Liberty Coach manufactured roll-out tray in 1st and 2nd bay passenger side
- Abundant LED lighting in all compartments.
- Durable, high-quality carpet for undercompartment flooring
- All stainless steel screws and bolts in undercompartment construction
- Hanging drawer in 1st and 2nd bay passenger side
- Decorator laminate on lower bay cabinets
- Metal floor in water compartment
- Enclosed holding tank & water compartment
- Holding tank compartment side walls polished
- LED under coach and rear engine door lighting

MODIFICATIONS TO ORDER

- Custom Paint by The Art of Design
- HD Winegard satellite dish
- 4 Zone Heated Flooring
- 360 Camera System
- 49" Flat Bedroom TV

- Ceramic Coat Front by The Art of Design
- Front Stone Guard by The Art of Design
- Rear window painted film by The Art of Design
- Center pillar monitor
- Exterior Blindspot Detection System
- Extended Galley Layout with single living room chair and desk
- Install dishwasher
- Pantry with fixed roll out shelves
- Hitch-View Camera
- Romba iRobot vacuum system
- Pressure washer with DI tanks in 1st bay driver side
- Delete dinette bar TV cabinet and TV
- Dishwasher
- Pressure Washer with DI system
- Dean Loucks Artist Series paint design
- Full Ceramic exterior coating.

Disclaimer: Due to the custom nature of each coach produced specifications may change without notice, please confirm specifications with Liberty Coach, Inc.

LIBERTYCOACH.COM
800-554-9877
COACHSALES@LIBERTYCOACH.COM