

2023 ELEGANT LADY #5438
SERRADO-B TRIPLE SLIDE EDITION



2023 ELEGANT LADY #5438

SERRADO-B TRIPLE SLIDE EDITION



A/C & HEATING SYSTEMS

- 4- 15,000 BTU Dometic Reverse Cycle heat roof mounted A/C system with Crestron control
- Air conditioning ducted concealed return air grills
- 83,000 BTU Espar with soldered hard wall copper plumbing with 6 heat exchangers continuously circulating hot water heat through the main engine and domestic water heater.
- Espar heat zoned on three thermostats including one in water bay
- Electric heat in bathroom toeboard
- Thermostatically controlled electric heat in water bay

ELECTRICAL SYSTEMS

- Continuous and uninterrupted stranded wiring
- 58 volt Volta Power Systems house electrical system,
- 3 digital Crestron touchpad operator interfaces
- Moritz Aerospace CAN bus network, electronic circuit breaker system with flat panel control, Crestron interfaced
- 12.5 KW Onan generator
- Exclusive Liberty Coach Super Quiet Generator hush box sound insulator
- Liberty Coaches own 90 amp automatic shore power transfer switch
- 3- 5000 watt 58 volt Volta Sine Wave Inverters
- 2- Lithium Ion 58 volt Volta Battery Packs interfaced to the Volta Network for complete monitoring of battery information
- 1 maintenance-free generator starting battery with auto boost from house batteries

- Exclusive Liberty Coach engineered Battery Watchdog automatic generator starting system
- Automatic shore power loss generator start control
- Shore power inlets on both port and starboard sides
- 75' electric shore power cord reel with remote control
- Cheater shore power adapter for twin 30 amp service
- Aesthetically pleasing switch locations
- Toe board accent lighting throughout coach
- Intercom system with remote control exterior camera & monitor in bedroom
- LED lights inside all interior cabinets
- Cradlepoint Wi-Fi internet access system

AUDIO/VISUAL SYSTEMS

- 55" LED/LCD 4K display in living room on roll down mechanism and 50" LED/LCD 4K television in bedroom.
- Wyrestorm HDMI audio/video switch with custom Fiber Optic HDMI cabling.
- Integra or compatible FM/AM Dolby Pro-Logic Surround sound systems in living room and bedroom with Air Play connectivity and KEF speaker systems.
- 2 - Apple TV units for complete coach viewing.
- Crestron remote control system on 3 touch screens and 1 3" RF remote, and 3 iPad Air units which control the complete coach including:
 1. Bedroom and Living room audio/video, and satellite systems
 2. Awning
 3. All lighting

4. Mechanical systems such as generator, Heat/AC, and electric locks
 5. Dash panel interfaced to back up camera
 6. Outdoor temperature with humidity display on all panels
 7. Espar heat thermostats
- 40 channel high output Cobra 29 LTD Classic CB radio with remote external speaker
 - Dash 12" iPad Pro which displays all coach functions including Fusion AM/FM Radio, Sirius Radio, and CoPilot RV Navigation system
 - Lower bay entertainment center: 65" LED/LCD 4K Flat Screen TV, Integra or compatible AVR 110 volt stereo, large refrigerator, storage drawers
 - Winegard in-motion and HD DSS Satellite Systems with 3 HD DVR receivers, 1 receiver dedicated to in-motion, dome painted to match
 - Winegard electric TV antenna with 1 HD local broadcast tuners

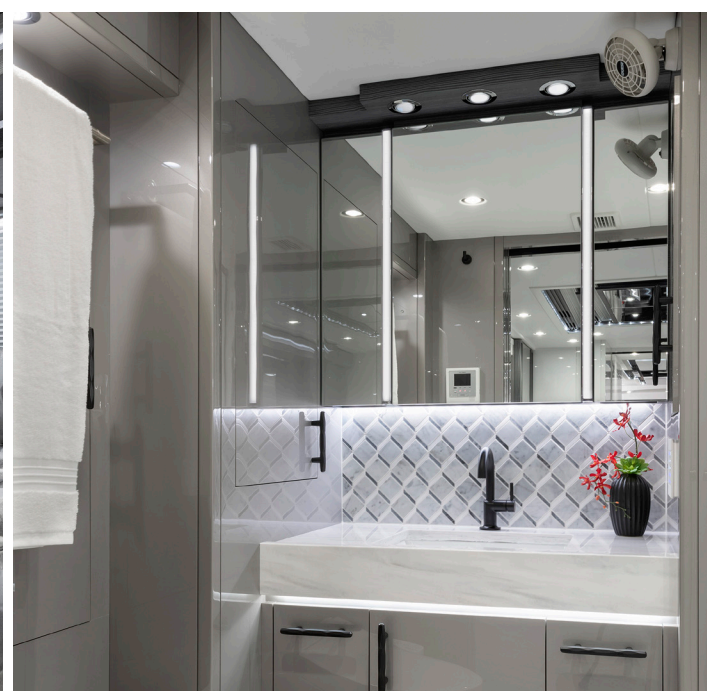
WATER SYSTEMS

- 189-gallon polished stainless steel fresh water tank
- 189-gallon aluminum holding tank with polished stainless front
- Enclosed water compartment with decorator laminate
- Holding tank compartment side walls and floor polished
- Hot & Cold water faucet in water tank compartment with hand sprayer
- Cold water hose connection in holding tank compartment for wash down and sewer hose clean-up
- Entire fresh water system, ½" ID tubing for constant pressure and volume in all areas

- Lacquer coated polished copper plumbing in holding tank bay
- 40-gallon electric water heater with main engine heat exchanger
- Hot water return system for instant hot water at all faucets
- Auto fresh water tank fill while connected to city water supply
- Fresh water & holding tank monitors on all iPads, Crestron Panels, driver & passenger side water bay
- City water inlet on both sides with 100 foot retractable hose reel on driver side.
- Air operated holding tank dump valve on both driver and passenger side
- Air operated gray water by-pass
- Air dump valve for fresh water tank
- Macerator pump out system for holding tank
- 110 volt jet-pack water pump with integral pressure vessel & polished stainless steel end cover
- Emergency water shut-off valves located at each faucet
- Culligan 3-stage water treatment unit with reverse osmosis filtration faucet at galley sink

BATHROOM/HALL VANITY/AFT BATH AREA

- 2-Water-jet anti-fume toilet
- Fantastic Vent bath fans with rain sensors in toilet room & in shower
- Wood flooring
- Tiled bathroom and hall vanity backsplash
- Separate his & her vanities with solid surfacing countertops with intergraded drip edge matching bowls or top mounted glass bowls
- Upgraded vanity faucets



2023 ELEGANT LADY #5438

SERRADO-B TRIPLE SLIDE EDITION



- LED lights above each vanity with adjustable directional lighting
- Mirrored bath/hall ceiling
- Tile shower with foot rest and shampoo caddy. Custom made shower pan and shower side walls built with rock board.
- Temperature/pressure controlled shower valve with hand sprayer

CABINETY/GALLEY/LIVING ROOM

- Wood veneer and high gloss laminate cabinetry
- Custom moldings throughout coach interior
- Solid surface countertops with integral drip edge design & underside lighting
- Breakfast bar with 2 fixed chairs and 22" LCD monitor.
- Large single bowl galley sink with cover
- Sink cover storage rack
- Adjustable shelves in cabinets
- Galley backsplash is tiled
- Pantry with adjustable shelves
- Concealed paper towel holder
- Keurig coffee maker
- Wolf Speed Convection Oven/Microwave
- Trash Container Drawer with removable basket
- Pantry Style Refrigerator with Freezer Drawers
- Asko stacking washer/dryer unit
- 2-burner, 220 volt Wolf induction cooktop, recessed with cover
- All interior walls of cabinets fully finished and laminated
- All cabinetry sub straight manufactured of hardwood and lightweight cored material
- Cabinets are attached directly to coach framework
- All cabinet doors and drawers have positive catches
- Floors of cabinets and drawer boxes lined with a secured plush covering
- Single lever galley faucet with integral spray nozzle

- Liberty Coach designed mirrored and upholstered ceiling with abundant LED down lighting on dimmers
- Wood flooring in galley and hallway
- CAD/CAM manufactured window frame surrounds designed to fit to coach window profile to allow most spacious "open" interior feeling
- Upholstered window frames with recessed lighting
- Custom built overstuffed electric sleeper sofa
- 2 Recliners with footrest and cabinet between chairs at Living Room passenger side
- Custom decorative throw pillows
- Quilted lower coach walls and entry door treatment
- Individual window shade for each window that can be operated all together or separately with remote.
- Air-operated pocket door with emergency release
- LED lighting in window arches
- Wood flooring in living room

BEDROOM

- Wood veneer and high gloss laminate cabinetry
- Custom bedroom ceiling with mirrored treatment
- Reading lights above bed
- Abundant LED down lighting on dimmers
- Electrically operated blackout window shades with remote control.
- King size bed with PranaSleep mattress
- Upholstered bed base
- Bed raised on toe board with decorative accent lighting underneath
- Custom quilted and shirred bedspread
- Upholstered walls & window sills
- Ultrasuede and fabric upgrades
- Custom made decorative throw pillows
- Large digital safe at the foot of bed
- Digital clock with alarm, snooze and dimmer built into Crestron panel
- Air operated pocket door from hallway to bedroom as well as aft bathroom

DASHBOARD/ELECTRONICS/DRIVER'S AREA

- Air operated step well cover with dual controls at driver and passenger side
- Entrance door step apron covered in polished stainless steel
- Handrail at inside entry
- Blacked-out front overhead cabinet
- Upholstered & padded bullnose edge on bottom of forward overhead cabinet
- Driver & Passenger dash upholstered in leather
- Electric privacy shades for driver & passenger with controls at driver's dash and passenger cabinet
- Electric sun shades for driver & passenger windshields with controls at driver's dash and passenger cabinet
- Smart Wheel, steering wheel
- Exclusive Liberty Coach custom upholstered driver and passenger cockpit area
- Custom Burlwood dash panels
- Knoelder air-ride custom upholstered leather and contrast insert driver's seat with electric base, heat, cooling, and massage
- Extra large stainless steel cup holders located thru-out driver and passenger area.
- 28" leather and contrast insert Villa six-way power co-pilot seat with footrest, heat and massage
- Driver and passenger map lights
- Ergonomically engineered switch locations at driver's dash
- House battery amp and voltage display on iPad
- 3- Master lighting switch controls
- 3- Tivoli accent lighting master switch controls
- Electric bay door locks with controls at driver, passenger, bedroom
- Upholstered entrance door with decorative design and LED lighting
- Keyless touchpad entry system with key fob and integral alarm system
- Escort radar detector with front and rear receivers including laser detection built into dash

2023 ELEGANT LADY #5438

SERRADO-B TRIPLE SLIDE EDITION



- High resolution color back-up camera w/pan-tilt interfaced to the Crestron dash panel
- Rechargeable flashlight at passenger cabinet
- Key ring hanger at entrance door designed to hold 5 sets of keys
- Driver console with extra large cup holder
- Generator stop/start controls at dash, galley, bedroom, & lower compartment

EXTERIOR/UNDERCOMPARTMENT

- Keyless touchpad entry system
- Steering wheel controlled air horn mounted behind front bumper
- Exclusive time-proven Liberty Coach designed Auto Level system with independent front, left rear and right rear manual override
- Electric Sunscreens at driver and passenger windshields
- Liberty Coach manufactured docking light, and front end trim
- Air Horns mounted behind front bumper
- Liberty Coach manufactured polished stainless steel side rails
- 13 Liberty Coach exclusive dimmable LED exterior mounted lights which are mounted on the driver side, passenger side, and at the bottom of the Entertainment Center bay door.
- Zip Dee New Century 2 stage box type awning system mounted on the roof full length driver and passenger side with front and rear interface caps; entire system painted to match coach. System includes shake sensors
- 4 Zip Dee chairs embroidered with Liberty Coach logo
- Wheel decor package
- Drive axle flap with polished trim on fenders
- 12 marker lights with polished stainless steel marker light trim
- Rear mud flap with polished stainless steel trim
- Polished stainless steel weights on all splash guards
- Docking lights mounted below rear bumper

- Custom designed polished stainless steel exhaust tip for generator exhaust
- Exclusive Liberty Coach manufactured polished stainless steel main engine belt guard
- Trailer hitch with light converter package for 3 or 4 tail light combinations
- 220 volt 30amp trailer power outlet at rear of coach.
- Exclusive Liberty Coach logo trailer hitch cover
- Liberty Coach manufactured roll-out tray in 1st and 2nd bay passenger side
- Abundant LED lighting in all compartments.
- Durable, high-quality carpet for under compartment flooring
- All stainless steel screws and bolts in under compartment construction
- Hanging drawer in 1st and 2nd bay passenger side
- Decorator laminate on lower bay cabinets
- Metal floor in water compartment
- Enclosed holding tank & water compartment
- Holding tank compartment side walls polished
- LED under coach lighting and at rear engine door same color as under coach.
- LED lighting installed on awning boxes

MODIFICATIONS TO ORDER

- Custom Paint by The Art of Design
- HD Winegard satellite dish
- 4 Zone Heated Flooring
- Tankless water heater for shower
- 50" Bedroom Flat TV
- Additional Apple TV unit
- Rear Windows painted vinyl by Art of Design
- Ceramic Coat Front, by The Art of Design
- Front Stone Guard by The Art of Design
- Exterior Blindspot Detection Package
- Face to face booth dinette in place of breakfast bar and stools

- Center pillar monitor
- Waterfall galley countertop
- Upgrade headlights to 9660 style
- Upgraded self-closing drawer slides

Disclaimer: Due to the custom nature of each coach produced specifications may change without notice, please confirm specifications with Liberty Coach, Inc.

LIBERTYCOACH.COM
800-554-9877
COACHSALES@LIBERTYCOACH.COM