

2024 ELEGANT LADY #902
VENETO QUAD SLIDE EDITION



2024 ELEGANT LADY #902

VENETO QUAD SLIDE EDITION



A/C & HEATING SYSTEMS

- 4- 15,000 BTU Dometic Reverse Cycle heat roof mounted air conditioning systems with Crestron controls
- Air conditioning ducted through ceiling with concealed return air grills
- 83,000 BTU Espar with soldered hard wall copper plumbing with 6 heat exchangers continuously circulating hot water heat through the main engine and domestic water heater.
- Espar heat zoned on three thermostats including one in water bay
- Electric heat in bathroom toeboard
- Thermostatically controlled electric heat in water bay

ELECTRICAL SYSTEMS

- Continuous and uninterrupted stranded wiring
- 58 volt Volta Power Systems house electrical system
- 3 digital Crestron touchpad operator interfaces
- Moritz Aerospace CAN bus network, electronic circuit breaker system with flat panel control, Crestron interfaced
- 12.5 KW Onan generator
- Exclusive Liberty Coach Super Quiet Generator hush box sound insulator
- Liberty Coaches own 90 amp automatic shore power transfer switch
- 3- 5000 watt -58 volt Volta Sine Wave Inverters
- 2- Lithium Ion 58 volt Volta Battery Packs interfaced to the Volta Network for complete monitoring of battery information
- 1 maintenance-free generator starting battery with auto boost from house batteries

- Exclusive Liberty Coach engineered Battery Watchdog automatic generator starting system
- Automatic shore power loss generator start control
- Shore power inlet on starboard side
- 75' electric shore power cord reel with remote control on driver side
- Cheater shore power adapter for twin 30 amp service
- Aesthetically pleasing switch locations
- Toe board accent lighting throughout coach
- Intercom system with remote control exterior camera & monitor in bedroom
- LED lights inside all interior cabinets
- Cradlepoint Wi-Fi hotspot cellular based internet access system

AUDIO/VISUAL SYSTEMS

- 55" LED display in living room on roll down mechanism and 50" LED television in bedroom
- Wyrestorm HDMI audio/video switch controlled via Crestron
- Dolby Pro-Logic Surround AVR sound systems in living room and bedroom with Air Play iPod connectivity and KEF speaker systems.
- 2-Apple TV units
- Crestron remote control system on 3 touch screens and 1 RF remote, and 3 iPad Air's which controls complete coach systems including:
 1. Bedroom and Living room audio/video, and satellite systems
 2. Awning
 3. All lighting
 4. Mechanical systems such as generator, Heat/AC, and electric locks

5. Dash panel interfaced to back up camera
6. Outdoor temperature with humidity display on all panels
7. Espar heat thermostats
 - 40 channel high output President CB radio with remote external speaker
 - Dash 12" iPad Air which displays all coach functions
 - Pioneer dash radio with 10" display, Apple Car Play and Andriod Auto
 - Lower bay entertainment center: 65" LED Flat Screen TV, AVR system, refrigerator, storage drawers and phone jack
 - Winegard HD DSS Satellite System with 2 HD DVR receivers.
 - Winegard electric TV antenna with HD local broadcast tuner

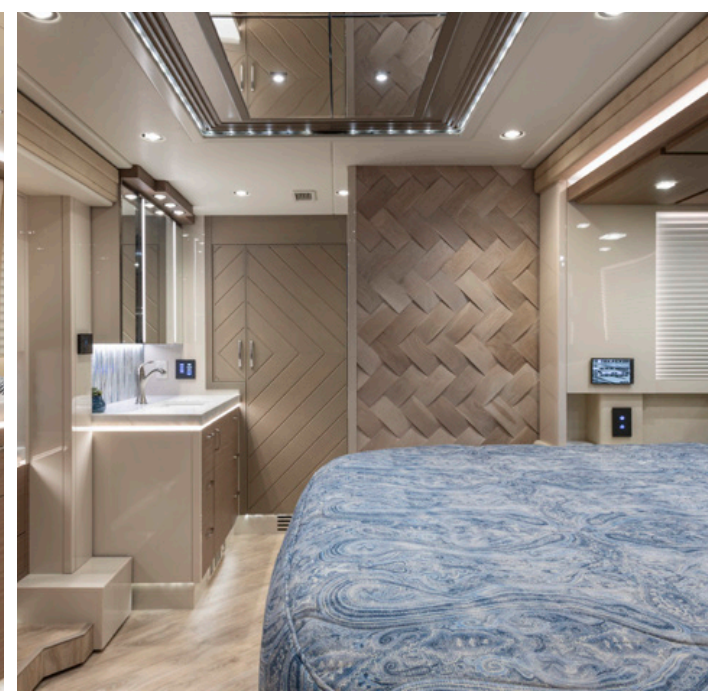
WATER SYSTEMS

- 189 gallon polished stainless steel fresh water tank
- 189 gallon aluminum holding tank with polished stainless front
- Enclosed water compartment with decorator laminate
- Holding tank compartment side walls and floor polished
- Hot & Cold water faucet in water tank compartment with hand sprayer
- Cold water hose connection in holding tank compartment for wash down and sewer hose clean-up
- Entire fresh water system, 1/2" ID tubing for constant pressure and volume in all areas
- Lacquer coated polished copper plumbing in holding tank bay
- 40 gallon electric water heater with main engine heat exchanger & winterization bypass

- Auto fresh water tank fill while connected to city water supply
- Fresh water & holding tank monitors at forward overhead, driver & passenger side water bays
- City water inlet on both sides with 100 foot retractable hose reel on driver side.
- Hot Water Return system to all faucets and shower valve.
- Air operated holding tank dump valve on both driver and passenger side
- Air operated gray water by-pass
- Air dump valve for fresh water tank
- Starboard side air dump valve
- Macerator pump out system for holding tank
- 110 volt jet-pack water pump with integral pressure vessel & polished stainless steel end cover
- Emergency water shut-off valves located at each faucet
- Culligan 3-stage water treatment unit with reverse osmosis filtration faucet at galley sink

HALL BATHROOM AREA

- Water-jet anti-fume toilets
- Fantastic Vent bath fans with rain sensors in toilet room & in shower
- Wood flooring
- Tiled bathroom and hall vanity backsplash, lighted
- Separate his & her vanities with solid surfacing countertops with intergraded drip edge matching bowls or top mounted glass bowls
- Upgraded vanity faucets
- LED lights above each vanity with adjustable directional lighting



2024 ELEGANT LADY #902

VENETO QUAD SLIDE EDITION



- Mirrored bath/hall ceiling
- Marble or granite shower with seat and shampoo caddy. Custom made shower pan and shower side walls built with rock board.
- Temperature/pressure controlled shower valve with hand sprayer

CABINETRY/GALLEY/LIVING ROOM

- Wood veneer cabinetry and high gloss laminate
- Solid surface countertops with integral drip edge design & underside LED lighting
- Breakfast bar with 2 fixed chairs and 15" LCD monitor
- Large single bowl galley sink with cover
- Sink cover storage rack
- Adjustable shelves in cabinets
- Tiled galley backsplash
- Pantry with adjustable shelves
- Concealed paper towel holder
- Keurig built in coffee system plumbed from the fresh water system
- Wolf microwave/convection oven
- Trash Container Drawer with removable basket
- Fisher Paykel Pantry style refrigerator with water dispenser
- Bosch stacking washer/dryer unit
- 2-burner, 220 volt Wolf Induction cooktop, recessed with cover
- All interior walls of cabinets fully finished and laminated
- All cabinetry sub straight manufactured of hardwood and lightweight cored material
- Cabinets are attached directly to coach framework
- All cabinet doors and drawers have positive catches
- Floors of cabinets and drawer boxes lined with a secured plush covering
- Single lever galley faucet with integral spray nozzle
- Liberty Coach designed mirrored and upholstered ceiling with custom designed wood moldings throughout with abundant LED down lighting on dimmers

- Wood flooring in galley and hallway
- CAD/CAM manufactured window frame surrounds designed to fit to coach window profile to allow most spacious "open" interior feeling
- Custom built sleeper sofa driver side
- Single reclining lounge chair
- Living room cabinet with pull out desk section
- Custom decorative throw pillows
- Quilted lower coach walls and entry door treatment
- Electrically operated window shades in living room with remote control
- Individual window shade for each window that can be operated all together or separately with remote.
- Abundant LED down lighting with dimmers
- Air-operated pocket door with emergency release
- LED lighting in window arches

BEDROOM

- Wood veneer cabinetry and high gloss laminate
- Custom bedroom ceiling with mirrored treatment, wood moldings
- Reading lights above bed
- Abundant LED down lighting on dimmers
- Electrically operated blackout window shades with remote control.
- King size bed with PranaSleep mattress
- Upholstered bed base
- Bed raised on toe board with decorative LED lighting underneath
- Custom quilted and shirred bedspread
- Upholstered walls & window sills
- Ultrasuede and fabric upgrades
- Custom made decorative throw pillows
- Flat charging stations at both sides of bed

- Large digital safe at the foot of bed
- Digital clock with alarm in Crestron panel with snooze and dimmer
- Air operated pocket door from hallway to bedroom

DASHBOARD/ELECTRONICS/DRIVER'S AREA

- Air operated step well cover with dual controls at driver and passenger side
- Entrance door step apron covered in polished stainless steel
- Handrail at inside entry
- Front overhead cabinets above driver and entry door
- Upholstered & padded bullnose edge on bottom of forward overhead cabinet
- Driver & Passenger dash upholstered in leather
- Electric privacy shades for driver & passenger with controls at driver's dash and passenger cabinet
- Electric sun shades for driver & passenger windshields with controls at driver's dash and passenger cabinet
- Smart Wheel, steering wheel
- Smart phone clamping flat charging station
- Exclusive Liberty Coach custom upholstered driver and passenger cockpit area
- Custom dash panels
- Knoelder air-ride custom upholstered leather and contrast insert drivers seat with electric base, heat, cooling, and massage
- Extra large stainless steel cup holders located thru-out driver and passenger area.
- 28" leather and contrast insert Villa six-way power co-pilot seat with footrest, heat and massage
- Driver and passenger red LED strip night lighting
- Ergonomically engineered gauge and switch locations at driver's dash
- House battery amp and voltage display on iPad
- Master lighting switch controls
- Tivoli accent lighting master switch controls

2024 ELEGANT LADY #902

VENETO QUAD SLIDE EDITION



- Electric bay door locks with controls at driver, passenger, bedroom
- Upholstered entrance door with decorative design and LED lighting
- Keyless touchpad entry system with key fob and integral alarm system
- High resolution color back-up camera w/pan-tilt interfaced to the dash iPad
- Rechargeable flashlight at passenger cabinet
- Key ring hanger at entrance door designed to hold 5 sets of keys
- Driver console with extra large cup holder
- Generator stop/start controls at dash, galley, bedroom, & lower compartment

EXTERIOR/UNDERCOMPARTMENT

- Keyless touchpad entry system
- Steering wheel-controlled air horn mounted behind front bumper
- Auto Level system with independent operation for all corners of coach with manual override
- Liberty Coach manufactured docking light, and front end trim
- Liberty Coach manufactured polished stainless steel side rails
- 11 Liberty Coach exclusive dimmable LED exterior mounted lights which are mounted on the driver side, passenger side.
- Zip Dee New Century 2 stage box type awning system mounted on the roof full length driver and passenger side with front and rear interface caps; entire system painted to match coach. System includes shake sensor
- 4 Zip Dee chairs embroidered with Liberty Coach logo
- Wheel decor package
- Drive axle flap with polished trim
- 12 marker lights with polished stainless steel marker light trim
- Rear mud flap with polished stainless steel trim

- Polished stainless steel weights on all splash guards
- Docking lights mounted below rear bumper
- Custom designed polished stainless steel exhaust tip for generator exhaust
- Exclusive Liberty Coach manufactured polished stainless steel main engine belt guard
- Trailer hitch with light converter package for 3 or 4 tail light combinations
- 220 volt 30amp trailer power outlet at rear of coach.
- Stainless cap on trailer hitch
- Exclusive Liberty Coach logo trailer hitch cover
- Liberty Coach manufactured roll-out tray in 1st and 2nd bay
- Abundant LED lighting in all compartments.
- Durable, high-quality carpet for undercompartment flooring
- All stainless steel screws and bolts in undercompartment construction
- Hanging drawer storage in 1st bay passenger side
- Decorator laminate on lower bay cabinets
- Metal floor in water compartment
- Enclosed holding tank & water compartment
- Holding tank compartment side walls polished
- LED under coach lighting

MODIFICATIONS TO ORDER

- Custom Paint by The Art of Design
- HD Winegard Satellite Dish
- 4 Zone Heated Flooring
- Tankless Water Heater to Shower
- 360 Exterior Camera System
- Paint Rear Window Vinyl by the Art of Design
- Front Stone Guard by The Art of Design
- Front Ceramic Coat by The Art of Design
- Additional hitch view camera

- Blind Spot Detection System
- Delete breakfast bar install chair and desk cabinetry
- Delete galley overhead microwave install Wolf Oven
- iPad mini change at passenger cabinet
- 2nd bay passenger side roll-out for customer refrigerator/freezer unit
- Center pillar monitor
- Back lighted Agate panels at galley backsplash
- iPad mini change at E-Center from Crestron panel
- Convertible sofa change from standard Villa sofa
- Disclaimer: Due to the custom nature of each coach produced specifications may change without notice, please confirm specifications with Liberty Coach, Inc.

LIBERTYCOACH.COM
800-554-9877
COACHSALES@LIBERTYCOACH.COM